



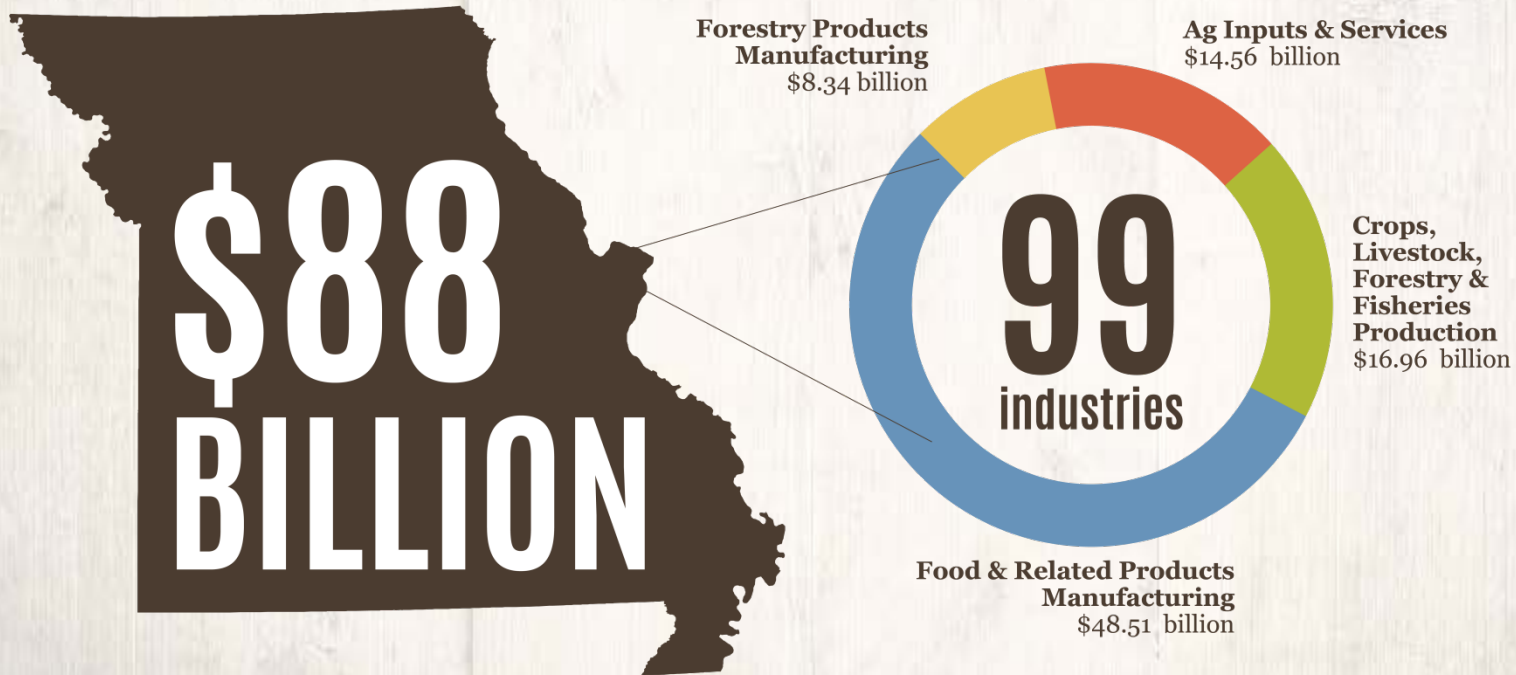
DISEASE RESPONSE IN MISSOURI

**Missouri Department of Agriculture
Animal Health Division**

Agriculture.Mo.Gov

Missouri Agriculture

- **Economic Driver of Missouri**



Missouri Agriculture

- **Top Ten in the United States**



SOYBEANS - 9TH
181 million bushels



BEEF COWS - 3RD
2 million head



CORN - 10TH
437 million bushels



BROILERS - 9TH
294 million head



HOGS - 7TH
3 million head



TURKEYS - 5TH
19 million head



RICE - 4TH
12 million cwt



COTTON - 8TH
400,000 bales

- **Export Market is growing**

Missouri Department of Agriculture

- **Director: Chris Chinn**
- **Deputy Director: Loyd Wilson**
- **Animal Health Division**
 - State Veterinarian: Dr. Linda Hickam
 - Animal Health Programs
 - Livestock Markets and Dealers
 - National Poultry Improvement Program
 - Animal Care Facility Act
 - Animal Disease Traceability
 - Chronic Wasting Disease
 - Veterinary Diagnostic Laboratories
 - Meat and Poultry Inspection Program
 - Emergency Management
 - Other Disease Programs
 - » Tuberculosis, Brucellosis, etc.



USDA - APHIS, VS

- **Missouri AD (Assistant Director)**
 - Dr. Thomas Easley
- **District 4**
 - Missouri
 - Oklahoma
 - Arkansas
 - Texas
 - Louisiana
 - Mississippi



Disease Response in Missouri

- **Classifications of disease**
- **When to call**
- **Who to call**
- **Response procedures**
- **Prevention**

Classifications of Disease

- **Regulatory Diseases and/or Reportable Diseases**
 - Brucellosis
 - Tuberculosis
 - Chronic Wasting Disease
 - Psuedorabies
 - Johne's
 - Rabies
- **Non Regulatory Diseases**
 - Pneumonia
 - Shipping Fever
 - Strangles
 - IBR
 - Swine influenza
 - Canine influenza

Classification of Diseases

Foreign Animal Diseases

- Screwworm
- Swine cholera
- Avian Influenza
 - High Pathogenic (HPAI) or Low Pathogenic (LPAI)
 - H5
 - H7
- Foot and Mouth Disease (FMD)
- Other diseases on the OIE list

When to call for disease concern

- **Unusual symptoms in herd or flock**
- **Unexplained death losses**
- **Any suspicion of FAD**
- **Unusual circumstances associated with illness in herd or flock**
- **Recommendation of practicing veterinarian**

Who should you call?

1. Your local veterinarian
2. State Veterinarian

Veterinarian Districts of Missouri



Missouri Department of Agriculture
P.O. Box 630
1616 Missouri Boulevard
Jefferson City, Missouri 65102

Updated: February 10, 2017

Agriculture.Mo.Gov





RESPONSE TO DISEASE INCIDENT

Agriculture.Mo.Gov

Regulatory Diseases

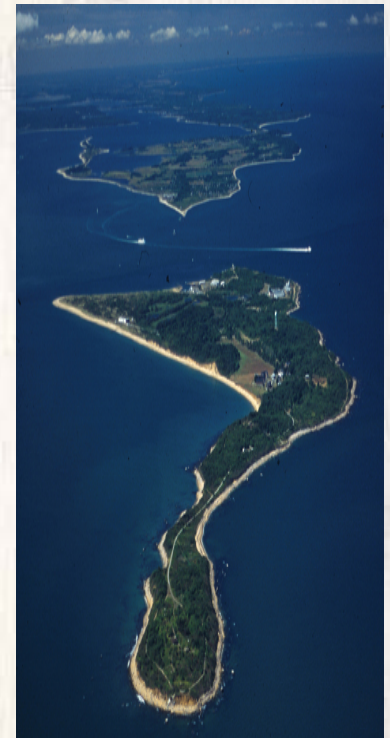
- **Quarantine**
- **Perform Epidemiological Investigation**
- **Conduct necessary testing/sampling**
 - Samples submitted to state regulatory diagnostic laboratory
 - Confirmation by National Veterinary Services Laboratory (NVSL)
- **Determine course of action**
 - Monitor herd/flock and/or controlled marketing
 - Test and remove positive animals
 - Depopulate the herd/flock

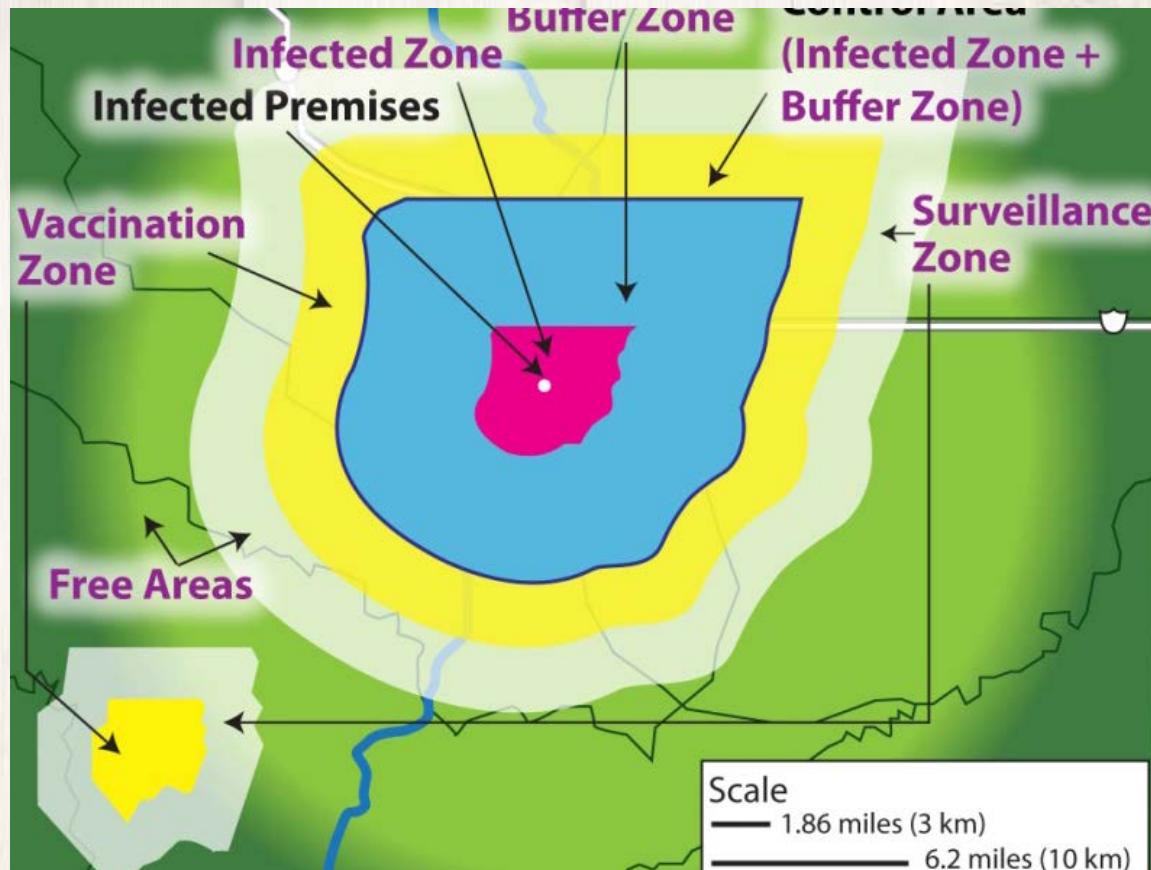
Non-Regulatory Diseases

- **State involvement is dependent upon the disease and severity**
- **Actions state has authority to implement**
 - Quarantine
 - Testing
 - Epidemiological investigation
 - Implementation of control/eradication protocols

Foreign Animal Disease Incidents

- **Foreign Animal Disease Diagnostician**
 - Conducts investigation within 12 hours of notification
 - Collects samples for diagnostic testing (if warranted)
 - Submitted to NVSL or Plum Island
 - Quarantines premises
- **Actions are dependent upon disease**
 - Depopulate
 - Monitor/test and move through controlled
 - Established Control Area
 - Permitted movement of animals and/or product within the Control Area





Quarantine Procedures

Establish buffer & surveillance zones

Plum Island

- **Biosafety Level 3 Agriculture Facility**

- Restricted access with 24/7 security
- Highly monitored by trained staff to prevent contamination
- Shower in and out of facility
- No exposure to animals for 5 days after leaving Plum Island
- Anything that enters the laboratory stays unless thoroughly decontaminated



Time Line of Moving to Plum Island to Manhattan, Kansas

NBAF Timeline

Environmental Impact Study	Determined Suitability of the Kansas Site	Completed
Record of Decision	The Department Stated that NBAF will be Sited in Kansas	Completed
Design	Develop Detailed Design	Completed
Site Preparation	Prepare Site for Construction	Completed
Construction	Construction of Central Utility Plant	Completed
	Begin Lab Construction	2015
Commissioning	Complete Facility Commissioning	2021*
Facility Accreditation	Receive Select Agent Permit	2022*
Mission Transition	Complete transition from Plum Island	2023*

Biosecurity is Prevention

- **Important actions for everyday activities on farm**
 - Dedicated work clothes and footwear
 - Manageable for doing business daily - practical
- **Written plan**
 - Training for everyone on farm
- **Test and audit of plan**
 - Observe yourself and others – is plan always followed
- **Review on regular basis**
 - Has anything on my operation changed that requires a change in my biosecurity plan



Connect with us:



TWITTER



FACEBOOK



YOUTUBE



LINKEDIN



FLICKR



INSTAGRAM

Agriculture.Mo.Gov